

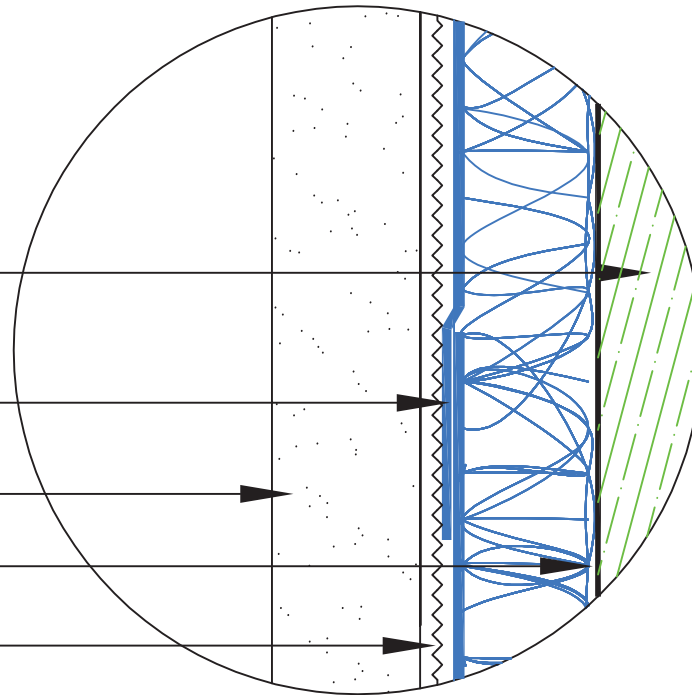
SHEATHING

4" FABRIC OVERLAP

3 LAYERS OF STUCCO

WEATHER RESISTANT BARRIER

METAL LATH/ SCRATCH COAT



## ENLARGED FABRIC LAP DETAIL



ADVANCED BUILDING PRODUCTS, INC.  
P.O. BOX 98  
SPRINGVALE, ME 04083

PHONE: 1-800-252-2306 FAX: 1-207-490-2998  
WWW.ADVANCEDFLASHING.COM

PRODUCT NAME: mortairvent<sup>®</sup>

NOTE: **mortairvent<sup>®</sup>** MATRIX (BLUE) SHOULD BE  
INSTALLED FACING THE WEATHER RESISTANT BARRIER,  
WITH THE MORTAR DEFLECTION FABRIC AGAINST THE  
METAL LATH FABRIC (FACING THE EXTERIOR WALL).

DRAWING NO:  
MV-STUCCO-LAP