

Driwall™ LathNet

Patented Drainage Plane and Metal Lath System for Adhered Masonry Veneers

Description

Keene Building Products has developed a new, patented, solution that combines a NEW structural strand polymer drainage mesh that offers up to 5 times greater airflow and 2.5lb or 3.4lb metal lath into a single component that streamlines installation. Mortar Net worked closely with experienced, professional masons throughout the system’s development to ensure it would perform in the field. Good practice recognizes the need for drainage and ventilation in adhered masonry veneer installations and Mortar Net has applied its decades of experience in moisture management to create a highly reliable, factory assembled system.

Sizes and Packaging

- Metal Lath: 27” W x 97” L
- Drainage Mesh: ¼” (6mm) nominal T x 25 ½” +/- ½” W x 94 ½” +/- ½” L
- Banded in bundles of 10 sheets
- 100 sheets per pallet (approximate weight: 600 lbs.) positive drainage at all rough openings.

Features and Benefits

Faster, easier installation than installing a drainage plane and lath separately

Installs like standard metal lath, no new installation skills or tools necessary

Combines proven components in an engineered and tested system

Clearly shows 1” minimum lath overlap

Promotes full lath encapsulation without clogging the drainage plane

Drainage mesh provides an effective mortar barrier

Self-furring

Drainage mesh edges butt together to form a continuous drainage plane

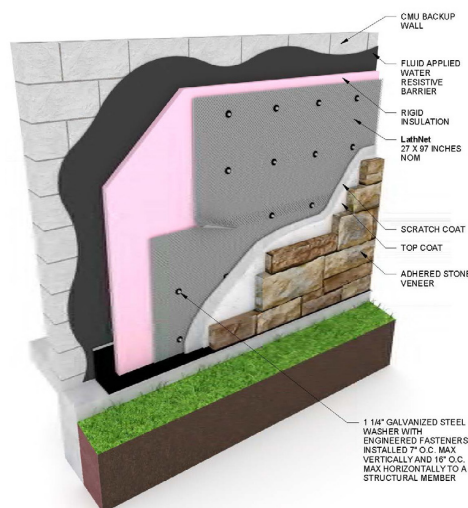
Lath is 2.5 lb dimpled, diamond mesh G-60 galvanized expanded steel for high strength and corrosion resistance

Drainage plane is a structural strand polymer mesh that allows unrestricted flow of moisture to the weep holes

Assembled in the USA from 100% USA-made materials

Conforms to ASTM C847 Size

LathNet Over CMU & Insulation Detail



LathNet Over Wood Stud Detail

