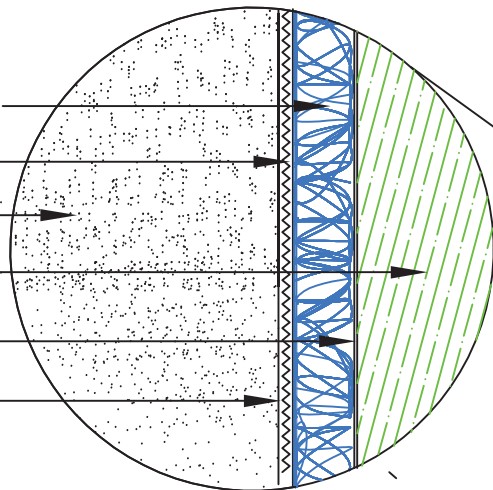
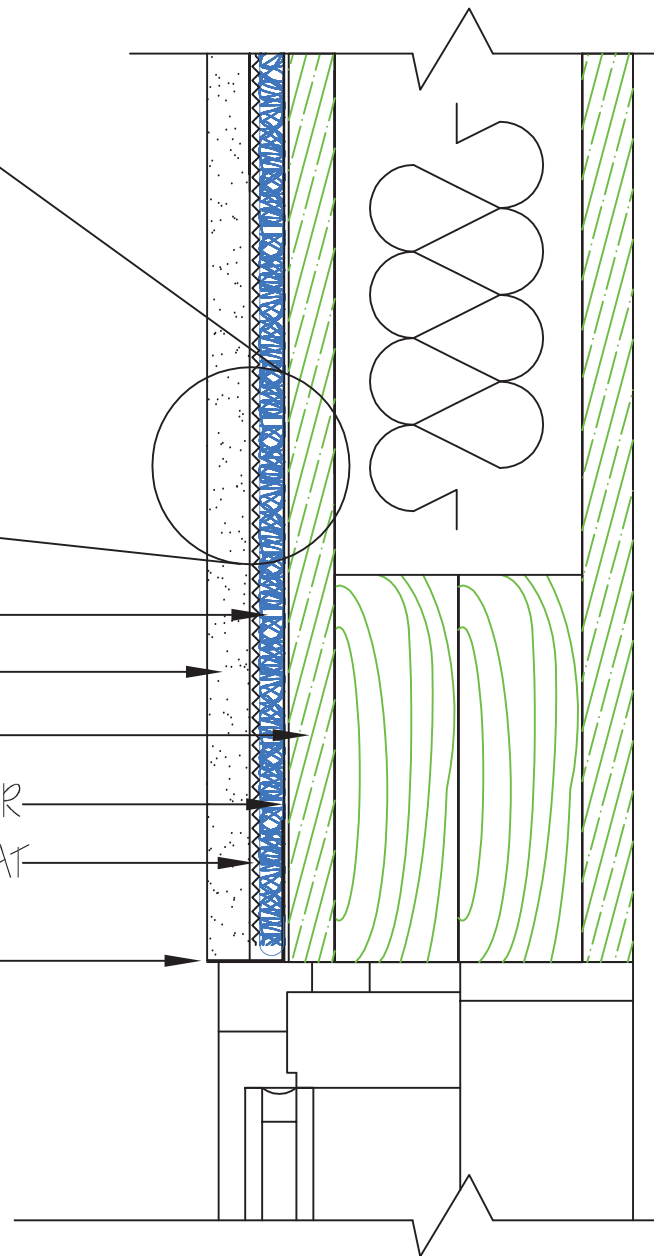


ENTANGLED POLYMER MATRIX  
 MORTAR DEFLECTION FABRIC  
 3 LAYERS OF STUCCO  
 SHEATHING  
 WEATHER RESISTANT BARRIER  
 METAL LATH/ SCRATCH COAT



(2 PLY) **mortairvent**<sup>®</sup>  
 3 LAYERS OF STUCCO  
 SHEATHING  
 WEATHER RESISTANT BARRIER  
 METAL LATH/ SCRATCH COAT  
 COP-R-SHIELD FLASHING



**STUCCO VENEER DETAIL**  
**@ TOP OF WINDOW**

ADVANCED BUILDING PRODUCTS, INC.  
 P.O. BOX 98  
 SPRINGVALE, ME 04083  
 PHONE: 1-800-252-2306 FAX: 1-207-490-2998  
 WWW.ADVANCEDFLASHING.COM

PRODUCT NAME: **mortairvent**<sup>®</sup>  
 NOTE: **mortairvent**<sup>®</sup> MATRIX (BLUE) SHOULD BE  
 INSTALLED FACING THE WEATHER RESISTANT BARRIER,  
 WITH THE MORTAR DEFLECTION FABRIC AGAINST THE  
 METAL LATH FABRIC (FACING THE EXTERIOR WALL).

DRAWING NO:  
 MV-STUCCO-WD1

